



Swansea Museum

Victoria Road, The Maritime Quarter, Swansea, SA1 1SN

01792 653 763 (tel:01792 653 763)

swansea.museum@swansea.gov.uk (mailto:swansea.museum@swansea.gov.uk)

Visit website (<http://www.swanseamuseum.co.uk>)

Access Guide

Location

- There is not a bus stop within 150m (164yds) of the venue.
- The nearest National Rail station is Swansea.

Opening Times

- Monday Closed.
- Tuesday 10:00 - 16:30.

- Wednesday 10:00 - 16:30.
- Thursday 10:00 - 16:30.
- Friday 10:00 - 16:30.
- Saturday 10:00 - 16:30.
- Sunday 10:00 - 16:30.

Parking

Photos



1

-
- The venue does not have its own car park.

Public Car Parks

- There is not a car park for public use within 200m (approx).

On Street Parking and Drop-off Details

- On street marked Blue Badge bays are available.

- On street Blue Badge parking is located Barrows Street.
- Clearly signed and / or standard marked parking bays are available.
- Standard marked parking bays are located opposite the museum.
- There is not a designated drop off point.

Comments

- No individual marked parking bays.

Outside Access (Main Entrance)

Photos



1

-
- This information is for the entrance located at the front of the building.
 - There is not level access into the venue.
 - The main door(s) open(s) away from you (push).

- The door(s) is / are double.
- The door(s) is / are heavy.
- The width of the door opening is 166cm (5ft 5in).

Second set of doors

- There is a second set of doors.
- The door(s) open(s) towards you (pull).
- The door(s) is / are double.
- The door(s) is / are heavy.
- The width of the door opening is 130cm (4ft 3in).

Level Change (Main Entrance)

Photos



1



2

- There is a/are step(s) to access this area/service.
- The step(s) is/are located in front of the entrance.
- There is/are 7 step(s) to the area/service.
- There is not tactile paving at the top and bottom of the steps.
- The step(s) is/are not clearly marked.
- The step(s) is/are shallow (2cm - 10cm).
- There is a/are handrail(s) at the step(s).
- The handrail(s) is/are on both sides.

Outside Access (Accessible Entrance)

Photos



1



2

-
- This information is for the entrance located to the rear of the building.
 - There is not level access into the venue.
 - The main door(s) open(s) automatically (towards you).

Second set of doors

- The automatic doors are push pad activated.
- The door(s) is / are double.
- The width of the door opening is 120cm (3ft 11in).
- There is a second set of doors.
- The door(s) open(s) automatically (away from you).
- The door(s) is / are double.
- The width of the door opening is 120cm (3ft 11in).

Photos



1

Level Change (Accessible Entrance)

- There is a ramp/slope to access this area/service.
- The ramp or slope is located on the path leading to the entrance.

- The ramp/slope is moderate.

Reception

Photos



1

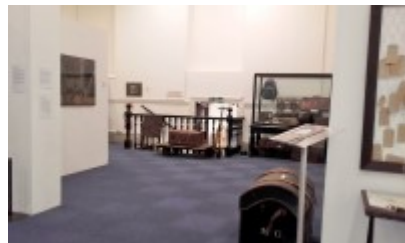
-
- The desk/counter is 1m (3ft 3in) from the main entrance.
 - There is level access to the desk/counter from the entrance.
 - The desk/counter is medium height (77cm - 109cm).
 - The desk/counter does not have a low (76cm or lower) section.
 - The lighting levels are adjustable.
 - There is not a hearing assistance system.

Inside Access

Photos



1



2

-
- There is level access to the service.
 - This venue does not play background music.
 - The lighting levels are bright.

Museum

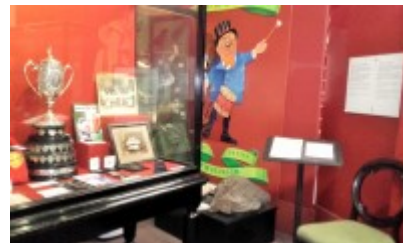
Photos



1



2



3

-
- Exhibits can be audio described.
 - Tactile signage for exhibits is available.
 - The availability of tactile signage depends on exhibition.
 - Braille signage for exhibits is available.

- The availability of Braille signage depends on exhibition.
- Touch tours are available.
- The availability of touch tours depends on exhibition.
- Video tours are available.
- There is not a hearing assistance system.
- There is a wheelchair to borrow.

Other Floors

Photos



1

Steps

- The floors which are accessible by stairs are LG-G-1.
- There are 15+ steps between floors.
- The steps are not clearly marked.
- The steps are medium (11cm - 17cm).

- The steps do have handrails.
- The steps have a handrail on both sides.
- There is not a landing.
- The lighting levels are bright.

Lift

Photos



1



2

-
- There is a lift for public use.
 - The lift is located at the rear of the venue, in the exhibit room to the left of the reception area.
 - The lift is a platform lift.
 - The floors which are accessible by this lift are LG-G-1.
 - The lift is approximately 11m (12yd 1in) from the main entrance.
 - Staff do need to be notified for use of the lift.

- The clear door width is 78cm (2ft 7in).
- The dimensions of the lift are 110cm x 140cm (3ft 7in x 4ft 7in).
- There are not separate entry and exit doors in the lift.
- There is not a mirror to aid reversing out of the lift.
- The lift does not have a visual floor indicator.
- The lift does have an audible announcer.
- The controls for the lift are within 90cm - 120cm from the floor.
- The lift does have Braille markings.
- The lift does not have tactile markings.
- The lighting level in the lift is medium.

Accessible Toilet

Photos



1

-
- There are accessible toilet facilities within this venue.

Location and Access

- The toilet is for the sole use of disabled people.
- There is pictorial signage on or near the toilet door.
- This accessible toilet is approximately 3m (3yd 10in) from the accessible entrance.
- The accessible toilet is located to the left as you enter.
- There is level access to this accessible toilet.

Features and Dimensions

- This is a unisex toilet.
- A key is not required for the accessible toilet.
- The door opens outwards.
- The door is locked by a twist lock.
- The width of the accessible toilet door is 90cm (2ft 11in).
- The door is light.
- The dimensions of the accessible toilet are 270cm x 150cm (8ft 10in x 4ft 11in).
- There is not sufficient turning space in the cubicle for a wheelchair user.
- There is a lateral transfer space.
- As you face the toilet pan the transfer space is on the left.
- The lateral transfer space is 83cm (2ft 9in).
- There is a dropdown rail on the transfer side.
- There is a flush, however it is not on the transfer side.

- The tap type is lever.
- There is a mixer tap.
- There is an emergency alarm.
- The emergency pull cord alarm is fully functional.
- Disposal facilities are available in the cubicle.
- There is a/are female sanitary and clinical waste disposal units.
- There is not a/are not coat hook(s).

Position of Fixtures

- Wall-mounted grab rails are available.
- As you face the toilet the wall-mounted grab rails are on both sides.
- There is not a shelf within the accessible toilet.
- There is a mirror.
- Mirrors are placed at a lower level or at an angle for ease of use.
- The height of the toilet seat above floor level is 45cm (1ft 6in).
- There is a hand dryer.
- The hand dryer cannot be reached from seated on the toilet.
- The hand dryer is not placed higher than 100cm (3ft 3in).
- There is not a towel dispenser.
- There is a toilet roll holder.
- The toilet roll holder can be reached from seated on the toilet.

- The toilet roll holder is not placed higher than 100cm (3ft 3in).
- There is a wash basin.
- The wash basin can be reached from seated on the toilet.
- The wash basin is not placed higher than 74cm (2ft 5in).

Colour Contrast and Lighting

- The contrast between the external door and wall is good.
- The contrast between the internal door and wall is good.
- The contrast between the wall-mounted grab rail(s) and wall is good.
- The contrast between the dropdown rail(s) and wall is good.
- The contrast between the walls and floor is good.
- The lighting levels are bright.

Standard Toilet(s)

Photos



Availability and Location of Standard Toilets

- Standard toilet facilities are available.

Access to Standard Shared Toilet(s)

- The shared toilets that were surveyed are located to the left after you enter.
- The shared toilet(s) is/are approximately 3m (3yd 10in) from the accessible entrance.
- Inside the venue, there is level access to the shared toilet(s).
- Lighting levels are bright.

Baby Change Facilities

- Baby change facilities are located within the venue.
- Baby change facilities are located within the standard toilets.
- The height of the baby change table once extended is 80cm (2ft 7in).
- Inside the venue, there is level access to the baby change facility.

Comments

- The shared toilet also contain grab and dropdown rails.

Additional Info

- Staff do receive disability awareness / equality training.
- A bowl of water can be provided for an assistance dog.